



# JULY

# S/S 25

RIVIERA MAYA

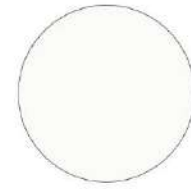
MEN'S  
WEAR

# JULY

## RIVIERA MAYA

Men's wear  
S/S 25

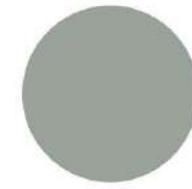
The rustic and natural backdrop of Azulik in Tulum inspired the black, white & neutral palette for July. This collection is a homage to both the rich mayan history of this region and the arts & crafts of this region.



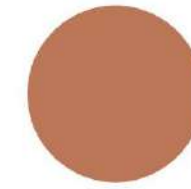
Bright White  
11-0601 TCX



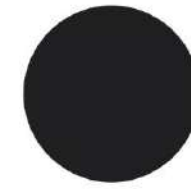
Summer Melon  
13-0814 TCX



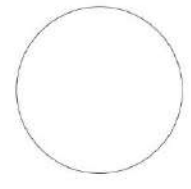
Iceberg Green  
16-5808 TCX



Pecan Brown  
17-1430 TCX



Black Beauty  
19-3911 TCX



Lucent White  
11-0700 TCX



Egret  
11-0103 TCX



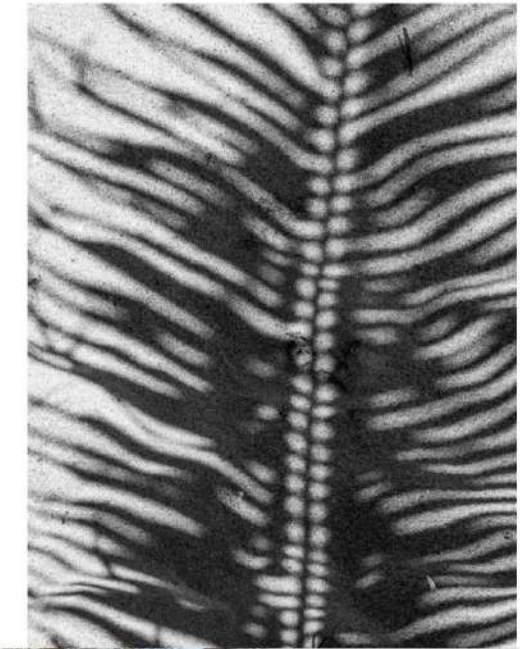
Amberlight  
14-1217 TCX



Cream Tan  
13-1108 TCX



Graystone  
19-3915 TCX



# JULY

## RIVIERA MAYA

Men's wear  
S/S 25



DOLCE & GABBANA



DIOR



VALENTINO



GUCCI



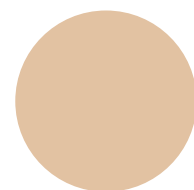
LOUIS VUITTON



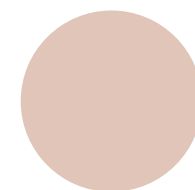
Lucent White  
11-0700 TCX



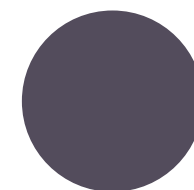
Egret  
11-0103 TCX



Amberlight  
14-1217 TCX



Cream Tan  
13-1108 TCX



Graystone  
19-3915 TCX

# JULY

## FABRIC TRENDS

Men's wear  
S/S 25



SHIRTS



KNITS



CASUALS



SUITING



ACTIVE

# JULY SHIRTS

Men's wear  
S/S 25



LINEN TEXTURES



DOUBLE TEXTURES



TENCEL/LYOCELL

# JULY KNITWEAR

Men's wear  
S/S 25



OTTOMAN/PATTERNED



TERRY JACQUARDS



INTERLOCK

**JULY**

Men's wear

CASUALS

SUITINGS

ACTIVE

S/S 25



NEUTRAL/TEXTURE/SATEEN



MELANGE



COATED & DOUBLE SIDED