



**APRIL**

**S/S 25**

**PORTOBELLO**

**MEN'S  
WEAR**



# APRIL

## PORTOBELLO

S/S 25

Capturing the charm of the decorated array of the pastel hued houses of Notting Hill, this fabric collections renders a sense of fresh optimism. The sorbet palette is the perfect way to kick start summer.



Baby Powder  
11-0501 TCX



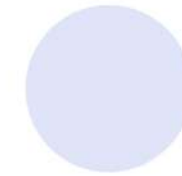
Dusty Pink  
14-1316 TCX



Lavender Fog  
13-3820 TCX



Ambrosia  
12-0109 TCX



Ice Melt  
13-4306TCX



White Smoke  
12-0704 TCX



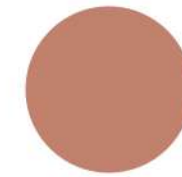
Brilliant White  
11-4001 TCX



Snow White  
11-0602 TCX



Lemon Icing  
11-0515 TCX



Coral Almond  
16-1434 TCX





# APRIL PORTOBELLO

Women's wear  
S/S 25



JIL SANDER

ANTONIO RIVA

CAROLINA  
HARRERA

FENDI

APUJAN



Baby Powder  
11-0501 TCX



Dusty Pink  
14-1316 TCX



Lavender Fog  
13-3820 TCX



Ambrosia  
12-0109 TCX



Ice Melt  
13-4306 TCX



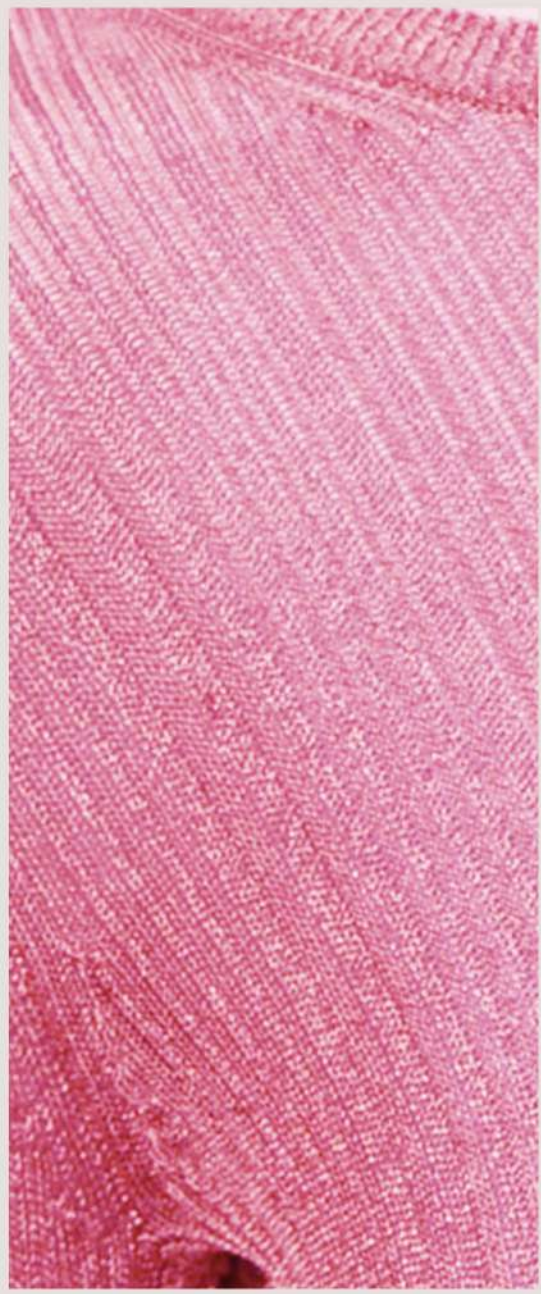
# APRIL

## FABRIC TRENDS

Women's wear  
S/S 25



**TOPS, SKIRTS  
& DRESSES**



**KNITWEAR**



**CASUALS**



**SUITINGS**



**ACTIVE WEAR**



**APRIL**

TOPS, SKIRTS & DRESSES

Women's wear

S/S 25



SHEERS



POPLINS



SEERSUCKERS





LOOPBACK TERRY



SHEERS



CRINKLE TEXTURES



**APRIL**

Women's wear

CASUALS

SUITINGS

ACTIVE

S/S 25



DOBBY TEXTURES



SOLIDS/YARNDYES



TEXTURES





**MAY**  
**S/S 25**

**IPANEMA**

**MEN'S**  
**WEAR**



# MAY

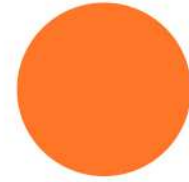
## IPANEMA

S/S 25

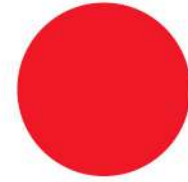
The brightly colored sunbeds & striped parasols of the brazilian beaches offers a great setting for high summer. This tropical backdrops inspired the fabrics for summer with a feeling of 'airyness' & vibrant patterns.



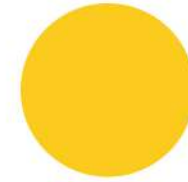
Strong Blue  
18-4051 TCX



Puffin's Bill  
16-1363 TCX



Flame Scarlet  
18-1662 TCX



Freesia  
14-0852 TCX



Fadango Pink  
17-2033 TCX



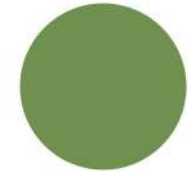
Golden Fleece  
10-0822 TCX



Ice Water  
13-4202 TCX



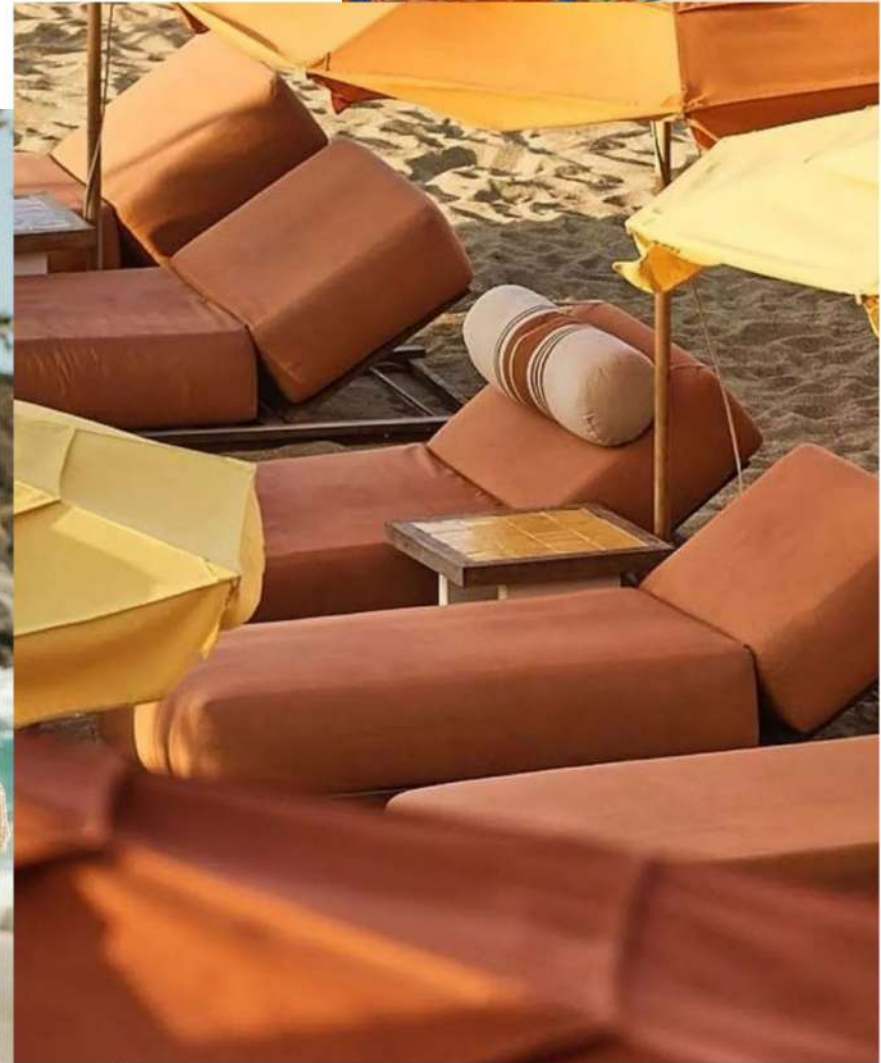
Marina  
17-4041 TCX



Tarragon  
15-0326 TCX



Honey Mustard  
17-1047 TCX





**MAY**  
IPANEMA

Women's wear  
S/S 25



ULLA JOHNSON

FENDI

ULLA JOHNSON

ERDEM

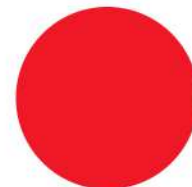
LOVE SHACK  
FANCY



Strong Blue  
18-4051 TCX



Puffin's Bill  
16-1363 TCX



Flame Scarlet  
18-1662 TCX



Freesia  
14-0852 TCX



Fadango Pink  
17-2033 TCX



**MAY**  
FABRIC TRENDS

Women's wear  
S/S 25



**TOPS, SKIRTS  
& DRESSES**



**KNITWEAR**



**CASUALS**



**SUITINGS**



**ACTIVE WEAR**



**MAY**

TOPS, SKIRTS & DRESSES

Women's wear

S/S 25



LINEN



YARN DYES



VOILE/GAUZE/MESH



**MAY**

KNITWEAR

Women's wear

S/S 25



LINEN KNITS



STRIPES



SELF TEXTURES



**MAY**

Women's wear

CASUALS

SUITINGS

ACTIVE

S/S 25



PAPERY & LIGHTWEIGHT  
TWILLS



LINEN BLENDS



SLUBS/ LINEN BLENDS/  
PRINTED





**JUNE**  
**S/S 25**

COSTA NOVA

MEN'S  
WEAR



# JUNE

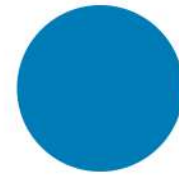
## COSTA NOVA

S/S 25

Drawing inspiration from the soulful promenades, magnificent sandy coastline and colorful beach houses. The blue & white Portuguese tile patterns and striped houses come together in blissful harmony to shape the fabrics for June.



Persian Jewel  
17-3934 TCX



Ibiza Blue  
17-4245 TCX



Cannoli Cream  
11-4302 TCX



Sky Blue  
14-4318 TCX



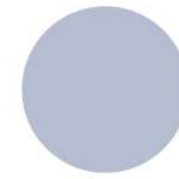
Eggnog  
12-0601TCX



Bright White  
11-0601 TCX



Ice Water  
13-4202 TCX



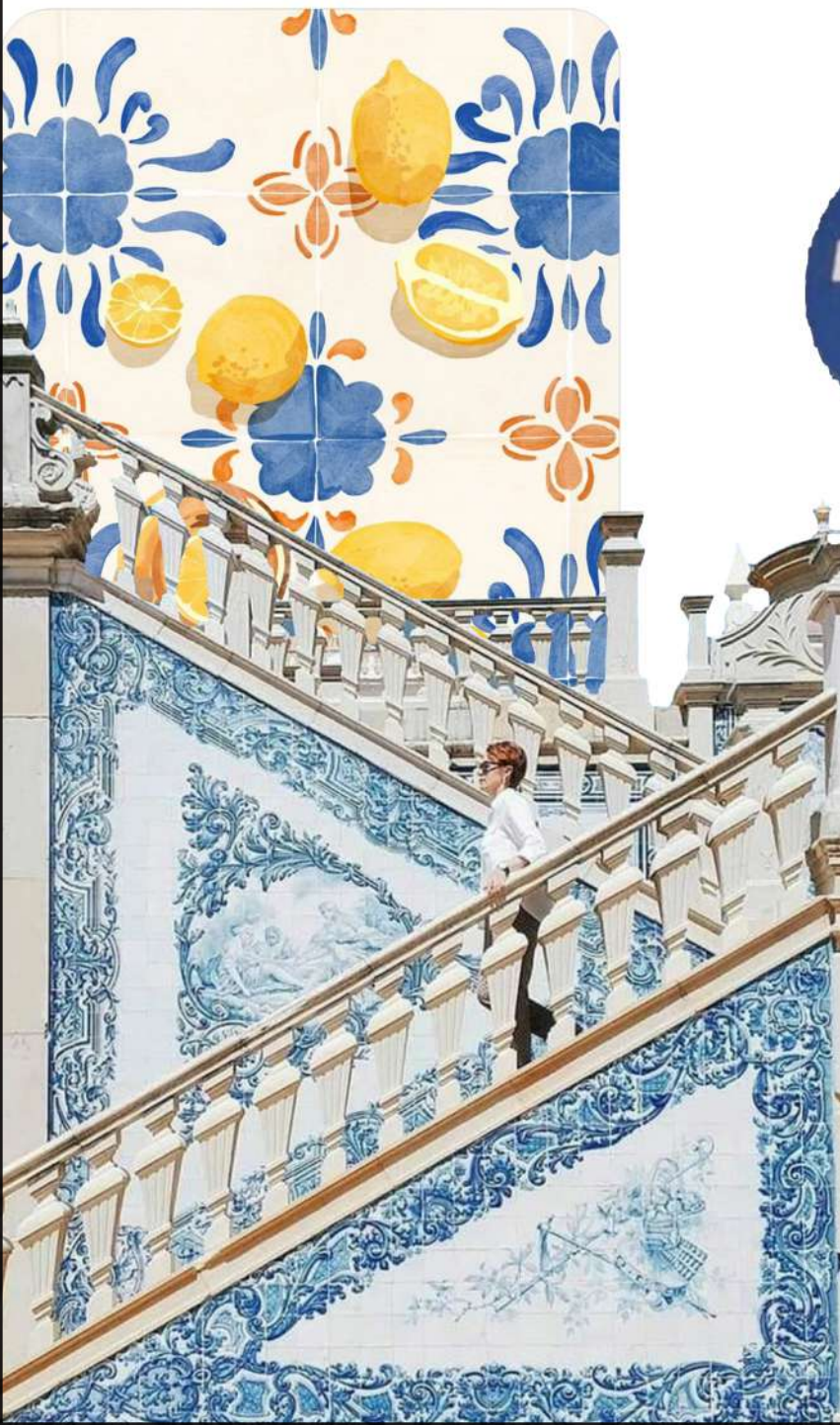
Heather  
14-4110 TCX



Delicate Blue  
10-4202 TCX



Blueprint  
19-3939 TCX





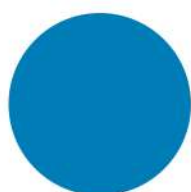
# JUNE

## COSTA NOVA

Women's wear  
S/S 25



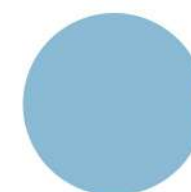
Persian Jewel  
17-3934 TCX



Ibiza Blue  
17-4245 TCX



Cannoli Cream  
11-4302 TCX



Sky Blue  
14-4318 TCX



Eggnog  
12-0601 TCX



# JUNE

## FABRIC TRENDS

Women's wear  
S/S 25



**TOPS, SKIRTS  
& DRESSES**



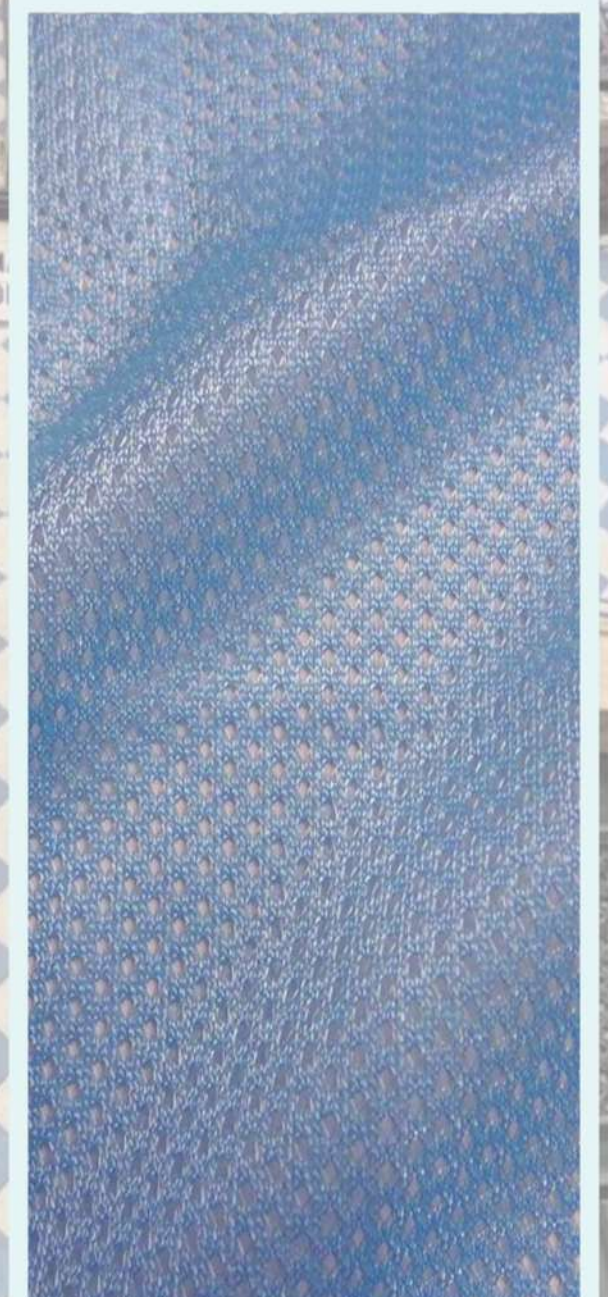
**KNITS**



**CASUALS**



**SUITINGS**



**ACTIVE**



**JUNE**

TOPS, SKIRTS & DRESSES

Women's wear

S/S 25



STRIPES



SCHIFFLY



CLIPS/JACQUARDS



**JUNE**

KNITWEAR

Women's wear

S/S 25



KNIT EYELETS



POINTELS



TEXTURED KNITS



**JUNE**

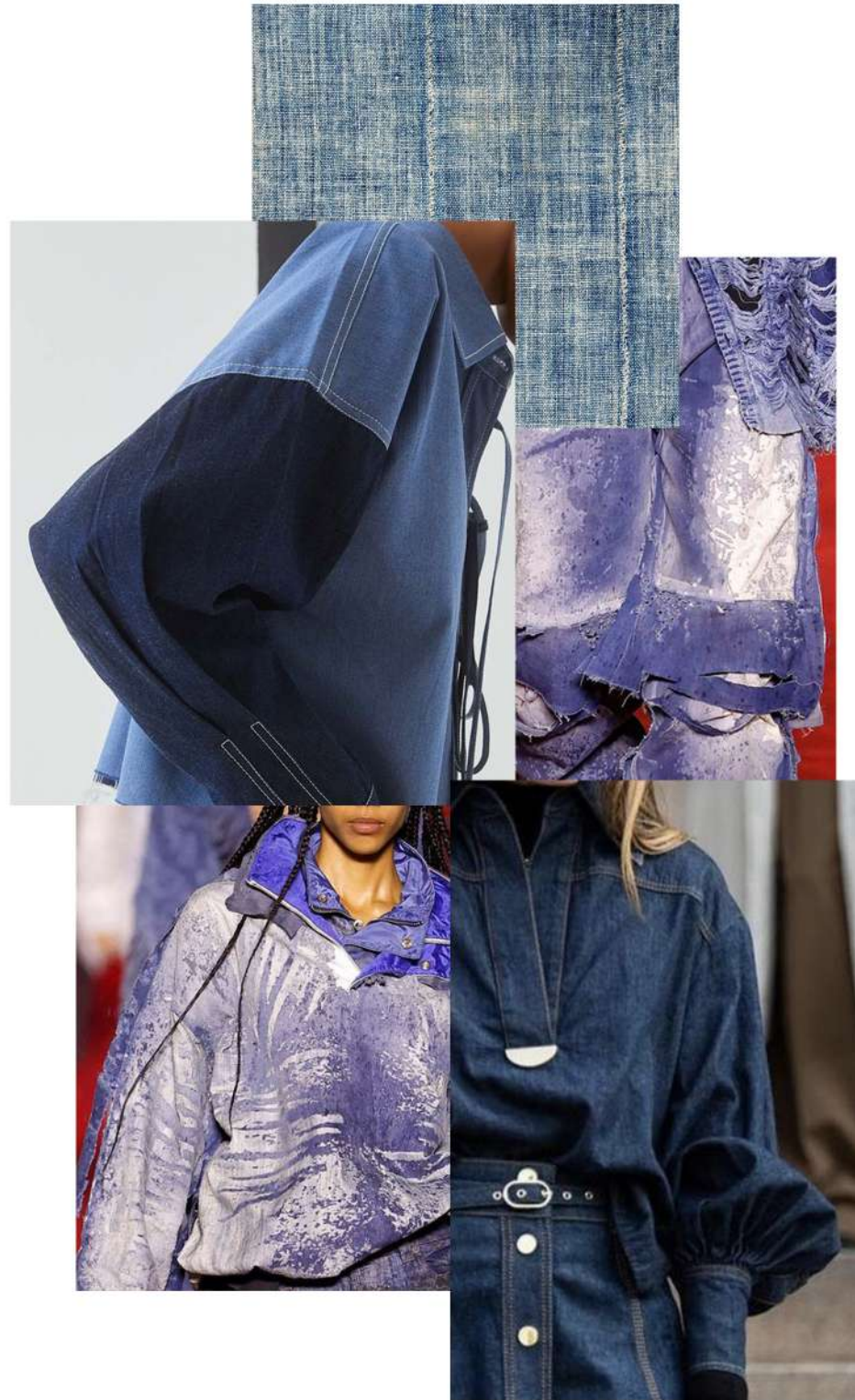
Women's wear

CASUALS

SUITINGS

ACTIVE

S/S 25



INDIGO/INDIGO  
TEXTURES



CHAMBRAY TEXTURES



CHAMBRAY/ YARN DYED  
TEXTURES





# JULY

# S/S 25

RIVIERA MAYA

MEN'S  
WEAR

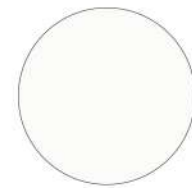


# JULY

## RIVIERA MAYA

S/S 25

The rustic and natural backdrop of Azulik in Tulum inspired the black, white & neutral palette for July. This collection is a homage to both the rich mayan history of this region and the arts & crafts of this region.



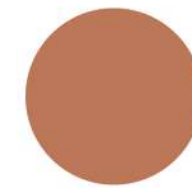
Bright White  
11-0601 TCX



Summer Melon  
13-0814 TCX



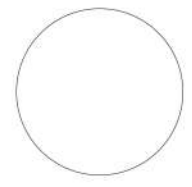
Iceberg Green  
16-5808 TCX



Pecan Brown  
17-1430 TCX



Black Beauty  
19-3911 TCX



Lucent White  
11-0700 TCX



Egret  
11-0103 TCX



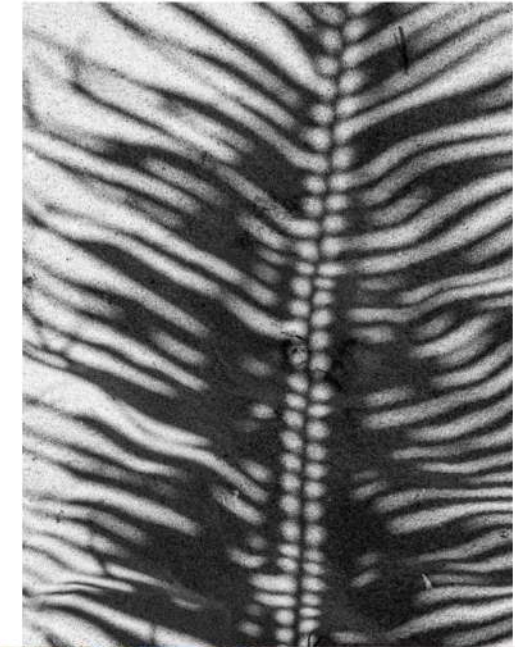
Amberlight  
14-1217 TCX



Cream Tan  
13-1108 TCX



Graystone  
19-3915 TCX





# JULY

## RIVIERA MAYA

Women's wear  
S/S 25



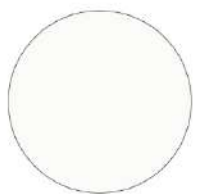
LOVE SHACK  
FANCY

SAINT LAURENT

TIBI

CAROLINA  
HERRERA

VICTORIA  
BECHAM



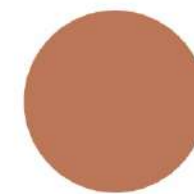
Bright White  
11-0601 TCX



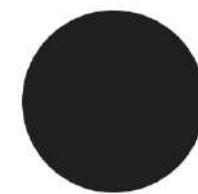
Summer Melon  
13-0814 TCX



Iceberg Green  
16-5808 TCX



Pecan Brown  
17-1430 TCX



Black Beauty  
19-3911 TCX



# **JULY**

## FABRIC TRENDS

Women's wear  
S/S 25



**TOPS, SKIRTS  
& DRESSES**

**KNITWEAR**

**CASUALS**

**SUITINGS**

**ACTIVE WEAR**



**JULY**

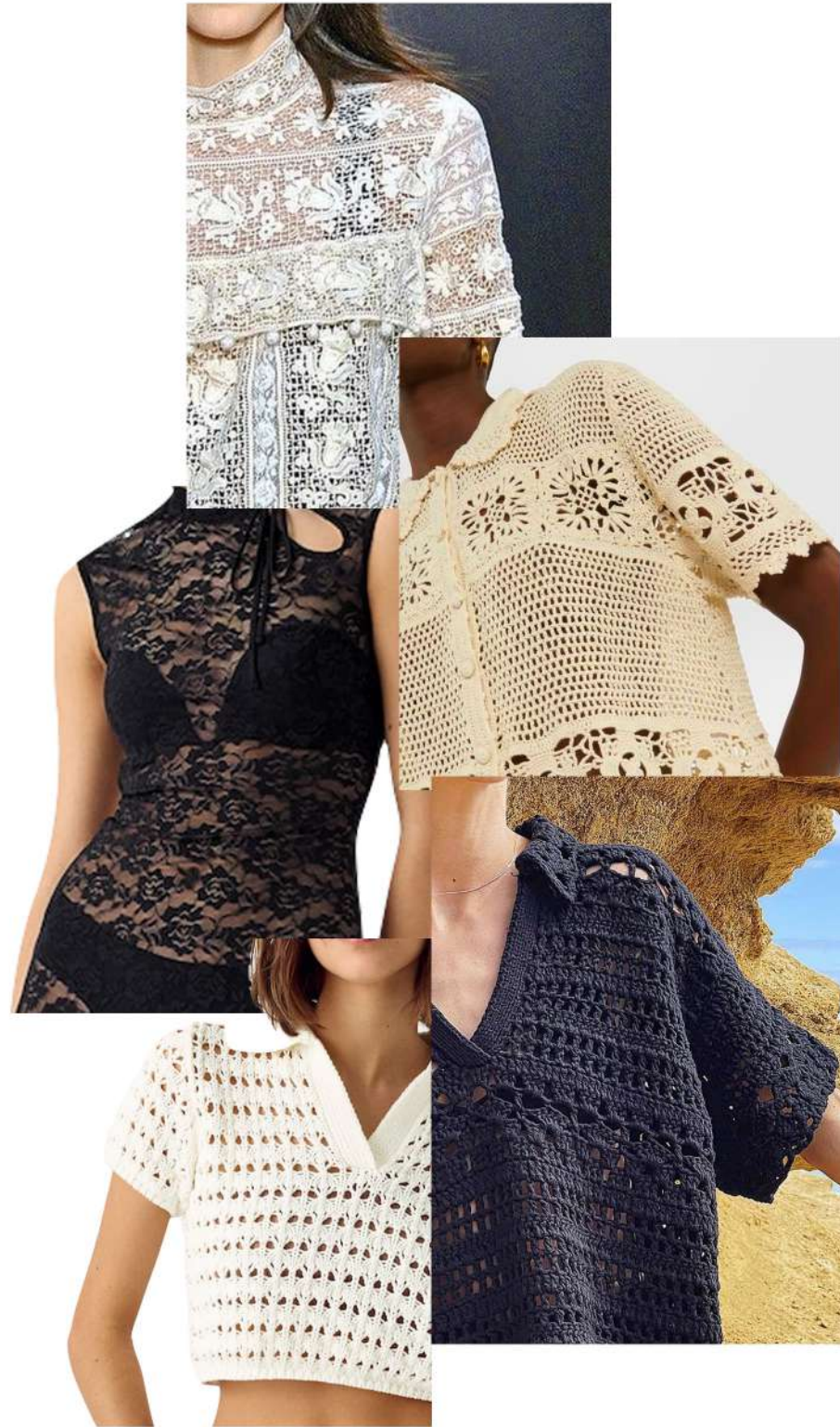
TOPS, SKIRTS & DRESSES

Women's wear

S/S 25



LINEN TEXTURES



CROCHET/ LACES



SATIN/SYNTHETIC  
TEXTURES



**JULY**

KNITWEAR

Women's wear

S/S 25



OPENWORK KNITS



SLUB TEXTURES



DRAPEY KNITS



**JULY**

Women's wear

CASUALS

SUITINGS

ACTIVE

S/S 25



NATURALS/ECRU  
TEXTURES & SATEENS



MELANGE/ CLASSIC  
PATTERNS



COATED/ DOUBLE SIDED  
FABRICS